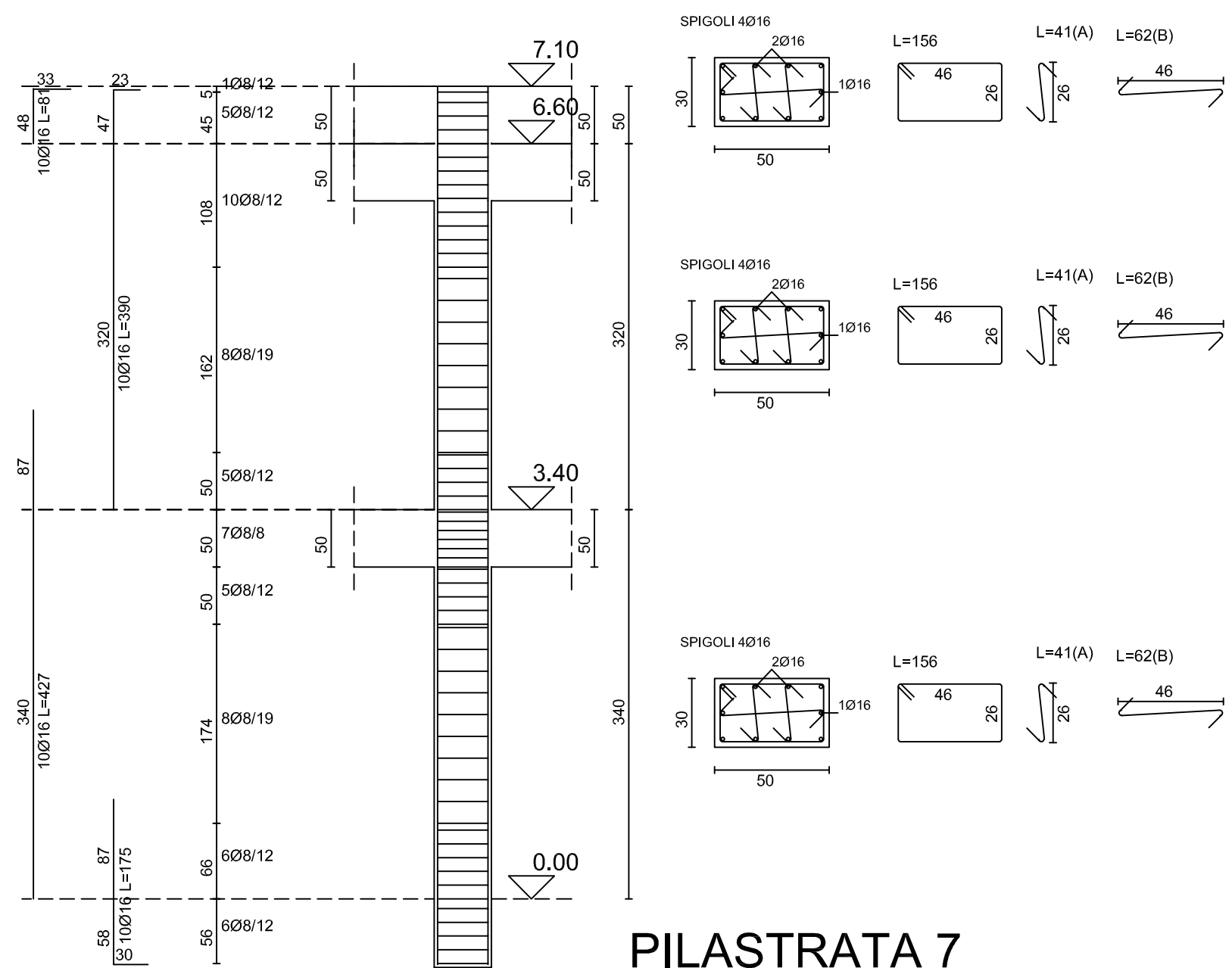
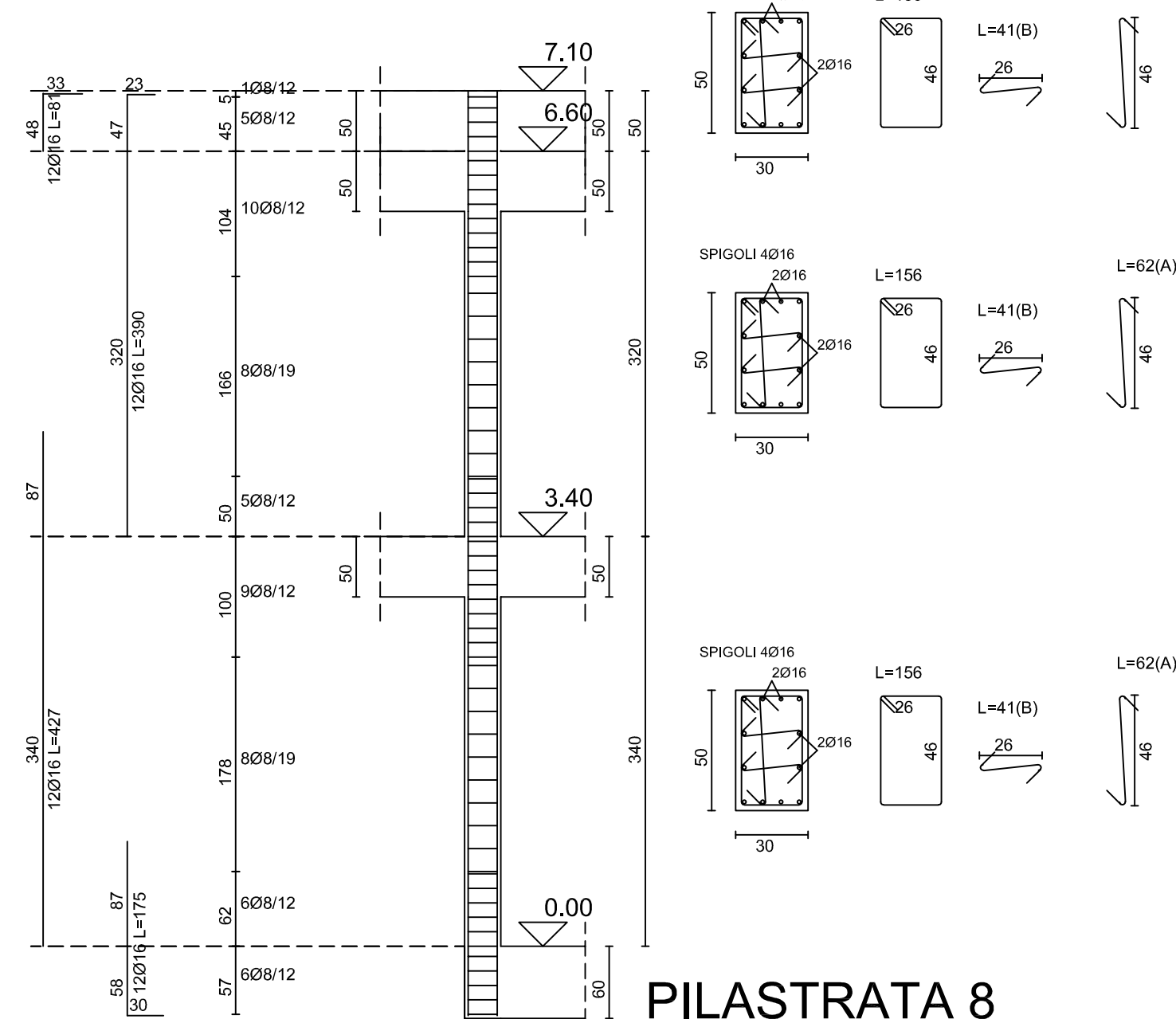


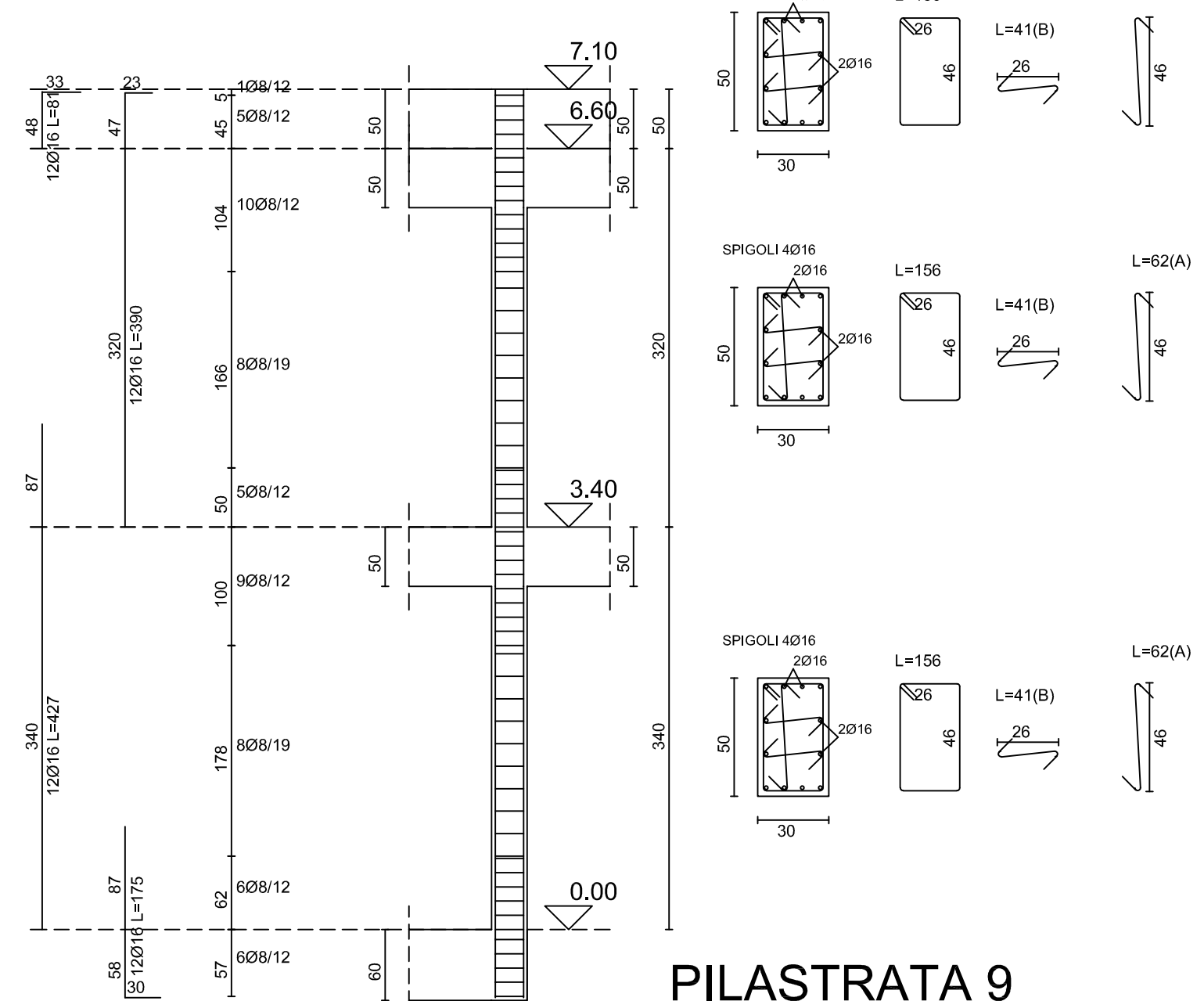
PILASTRATA 6



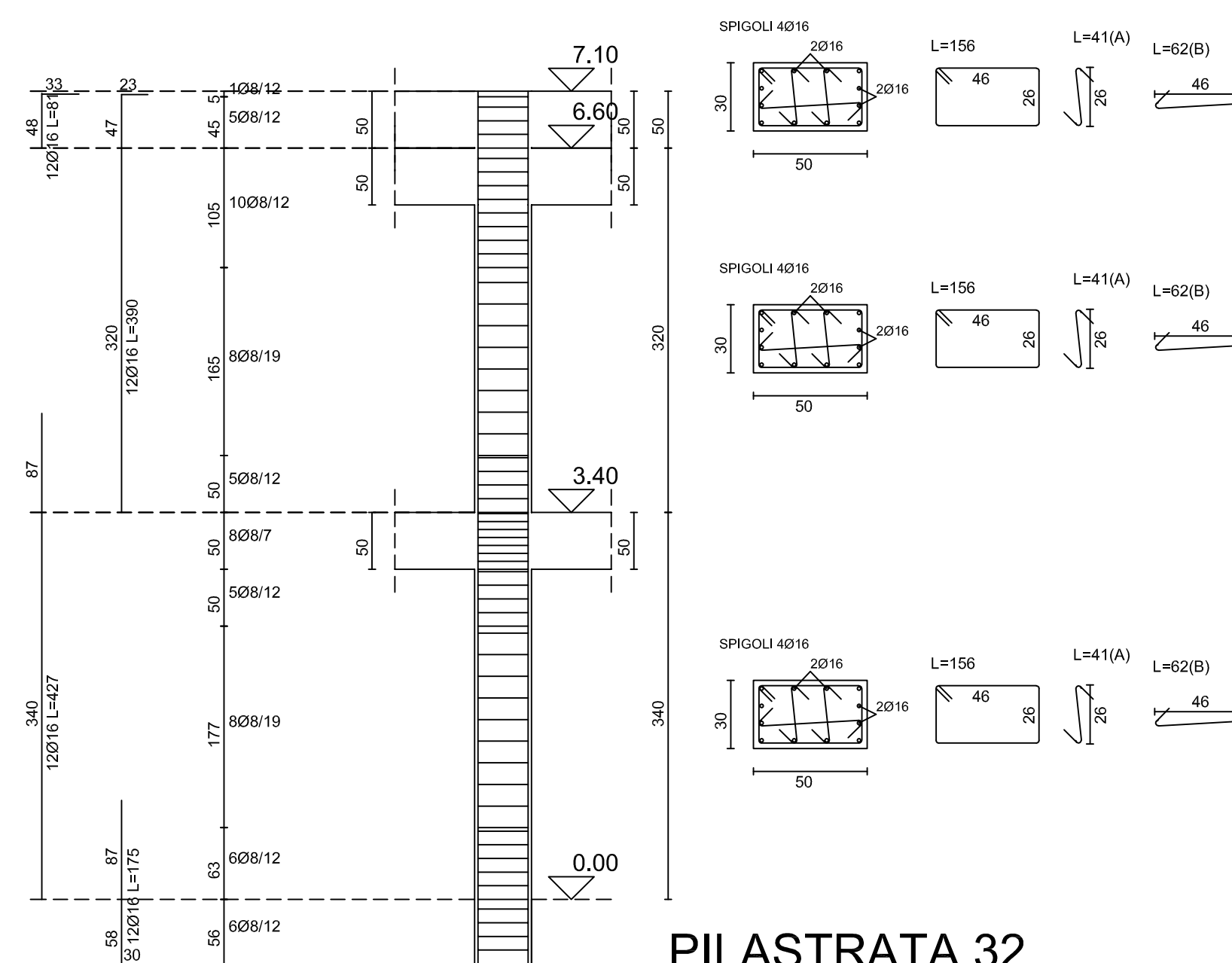
PILASTRATA 7



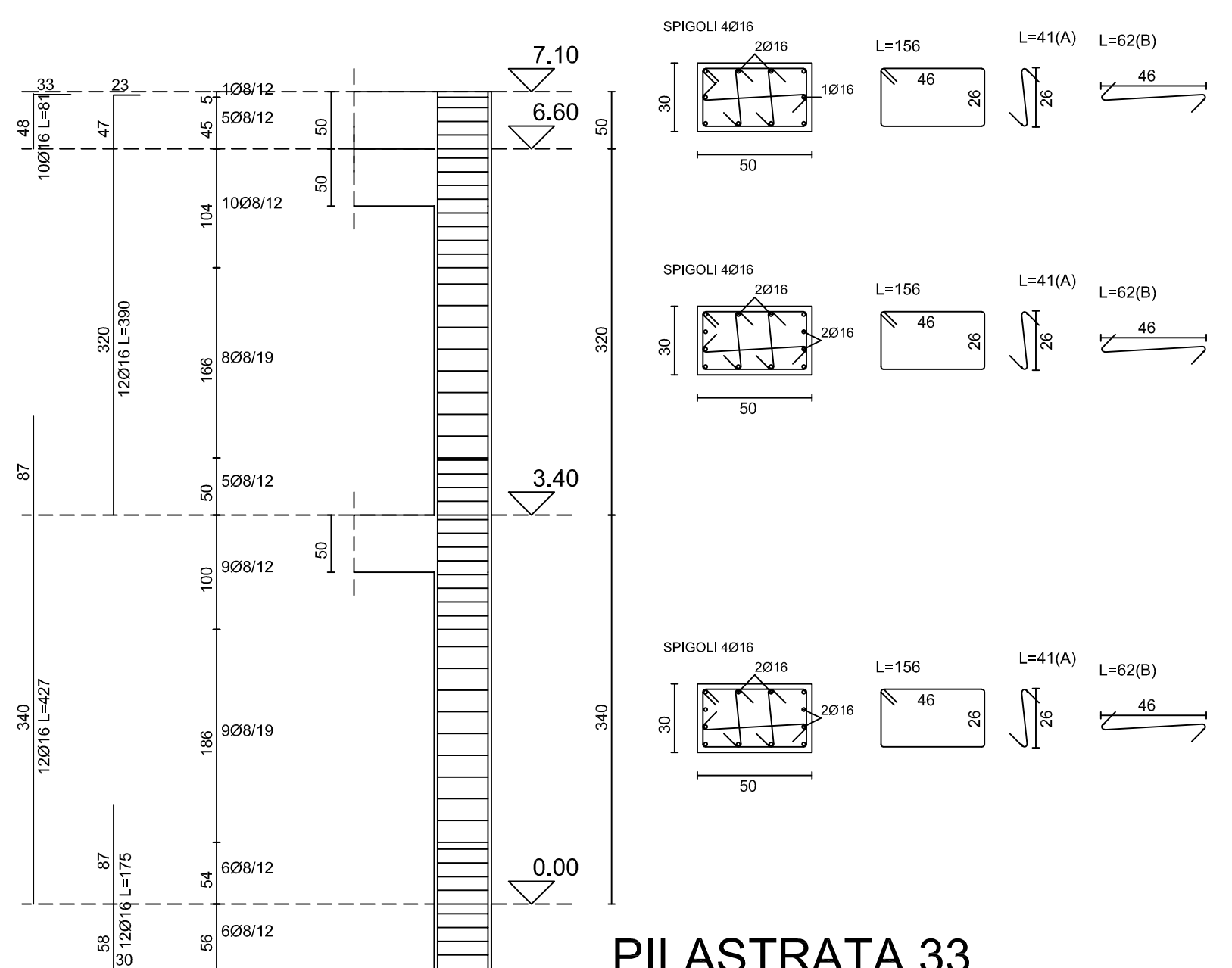
PILASTRATA 8



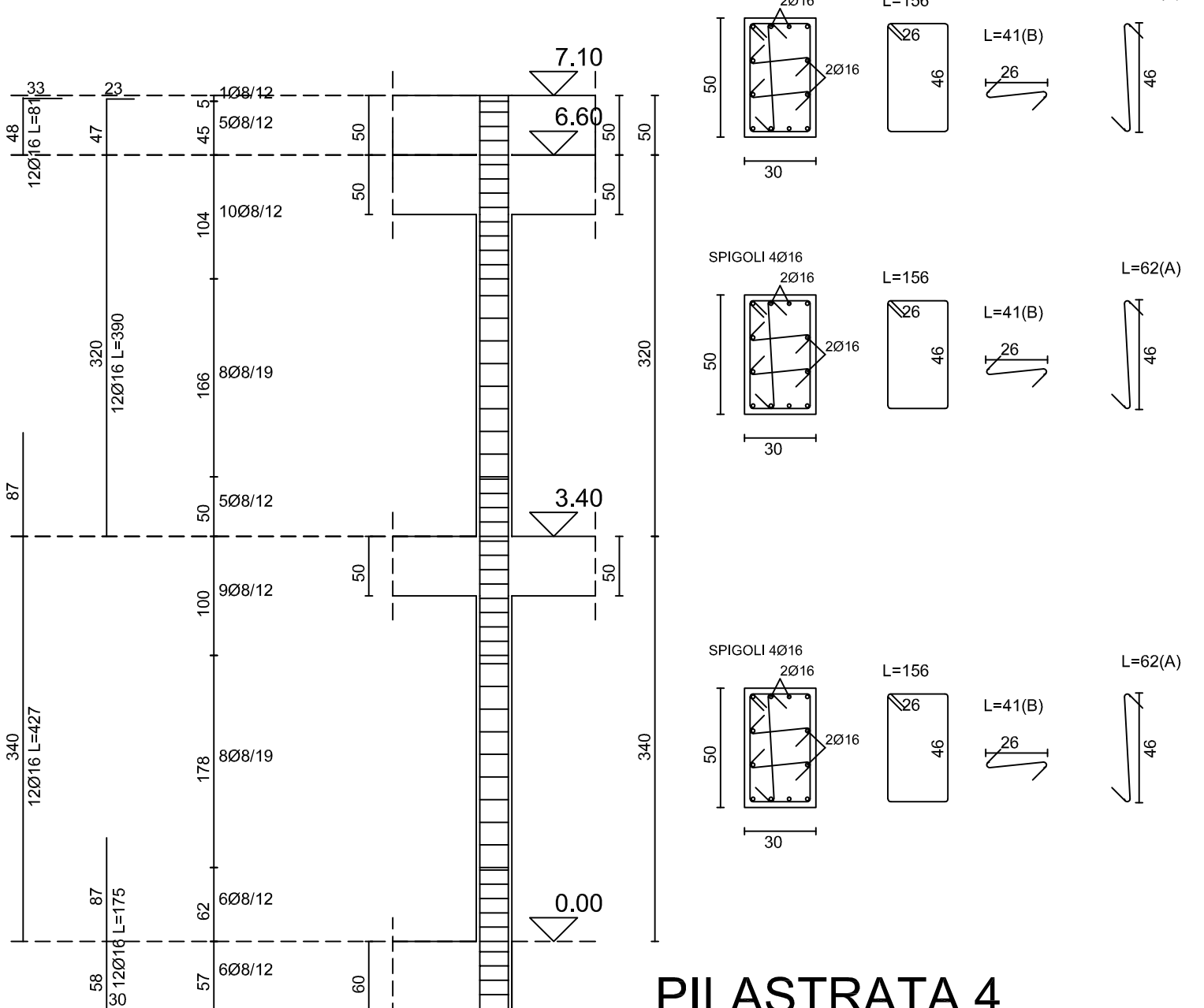
PILASTRATA 9



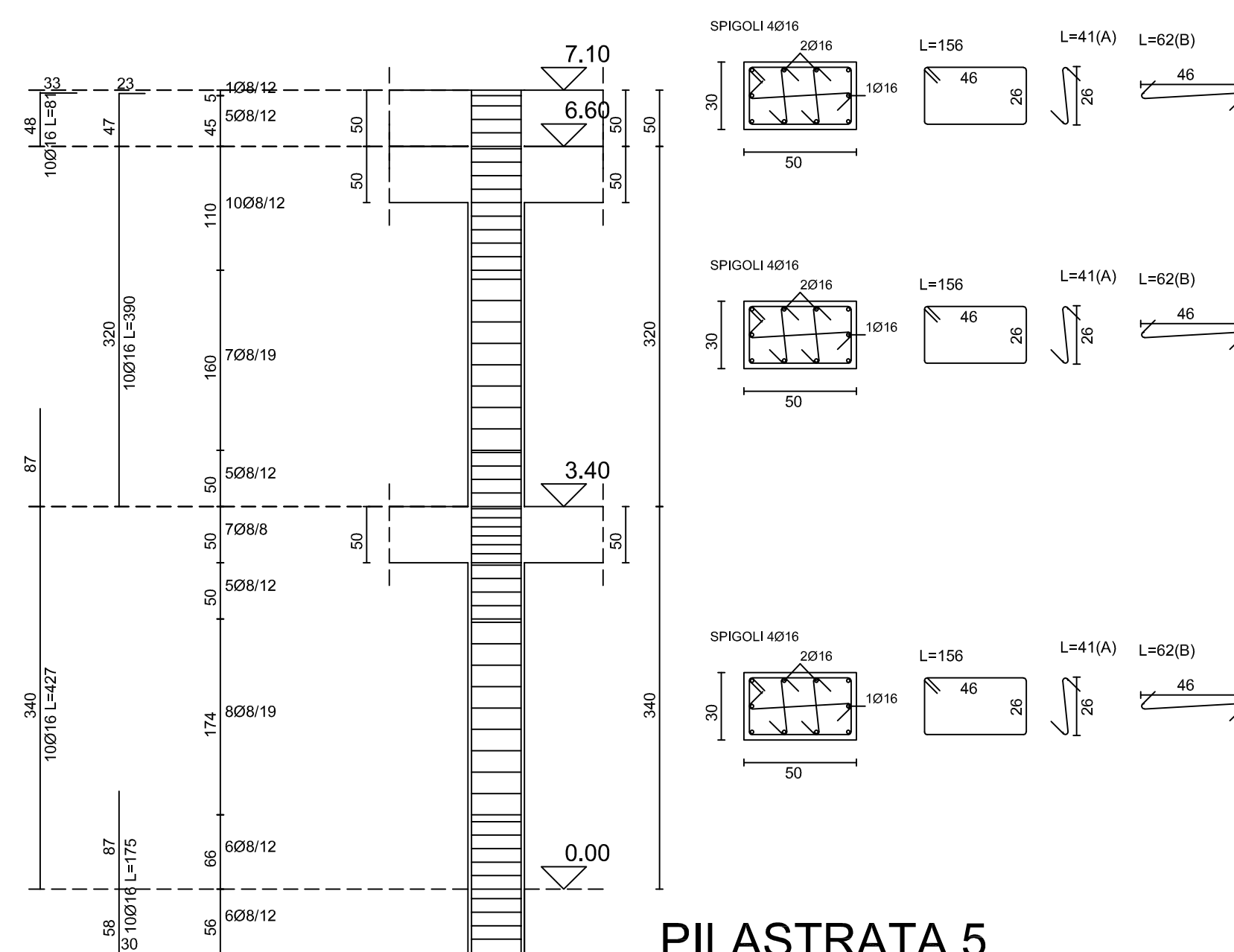
PILASTRATA 32



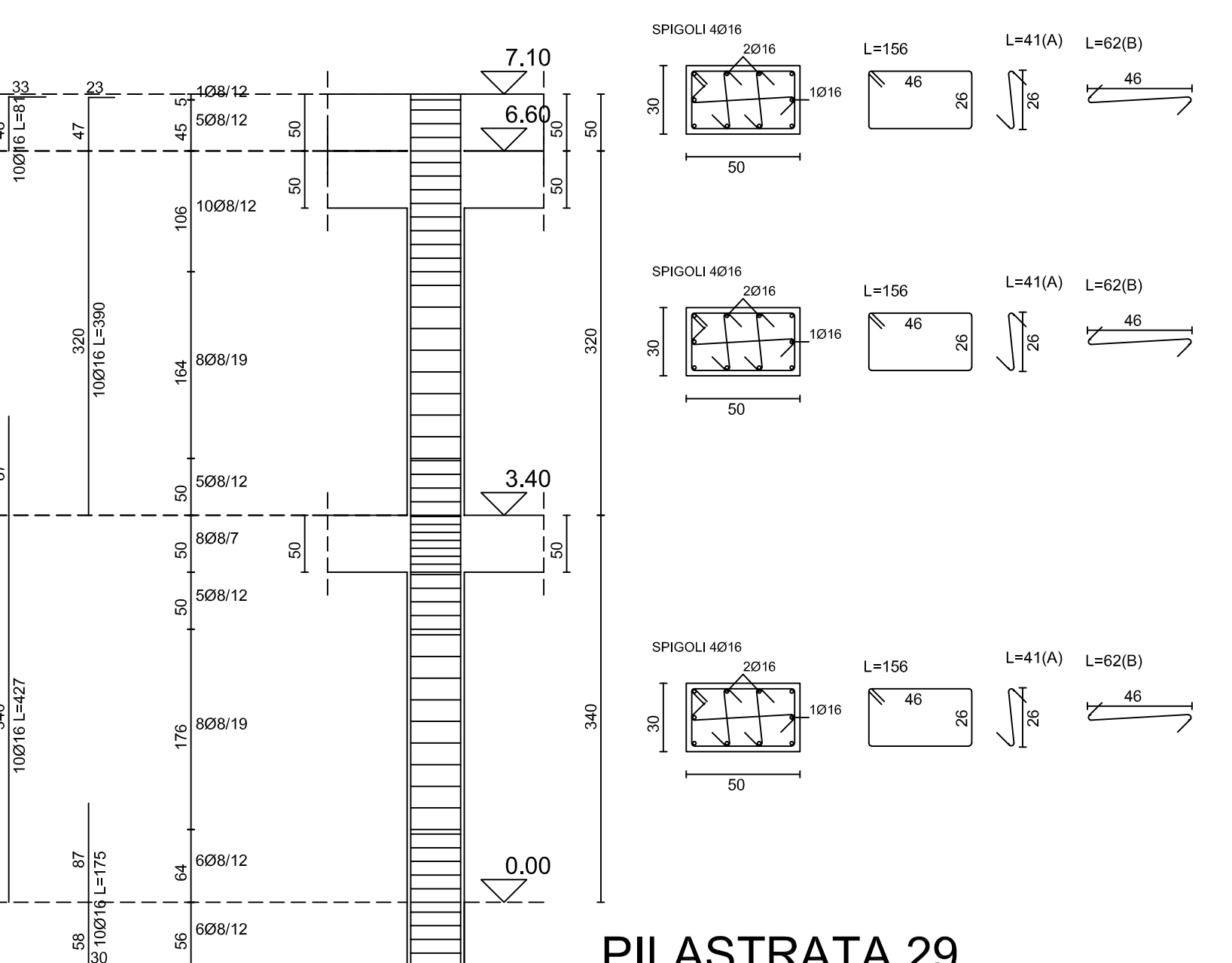
PILASTRATA 33



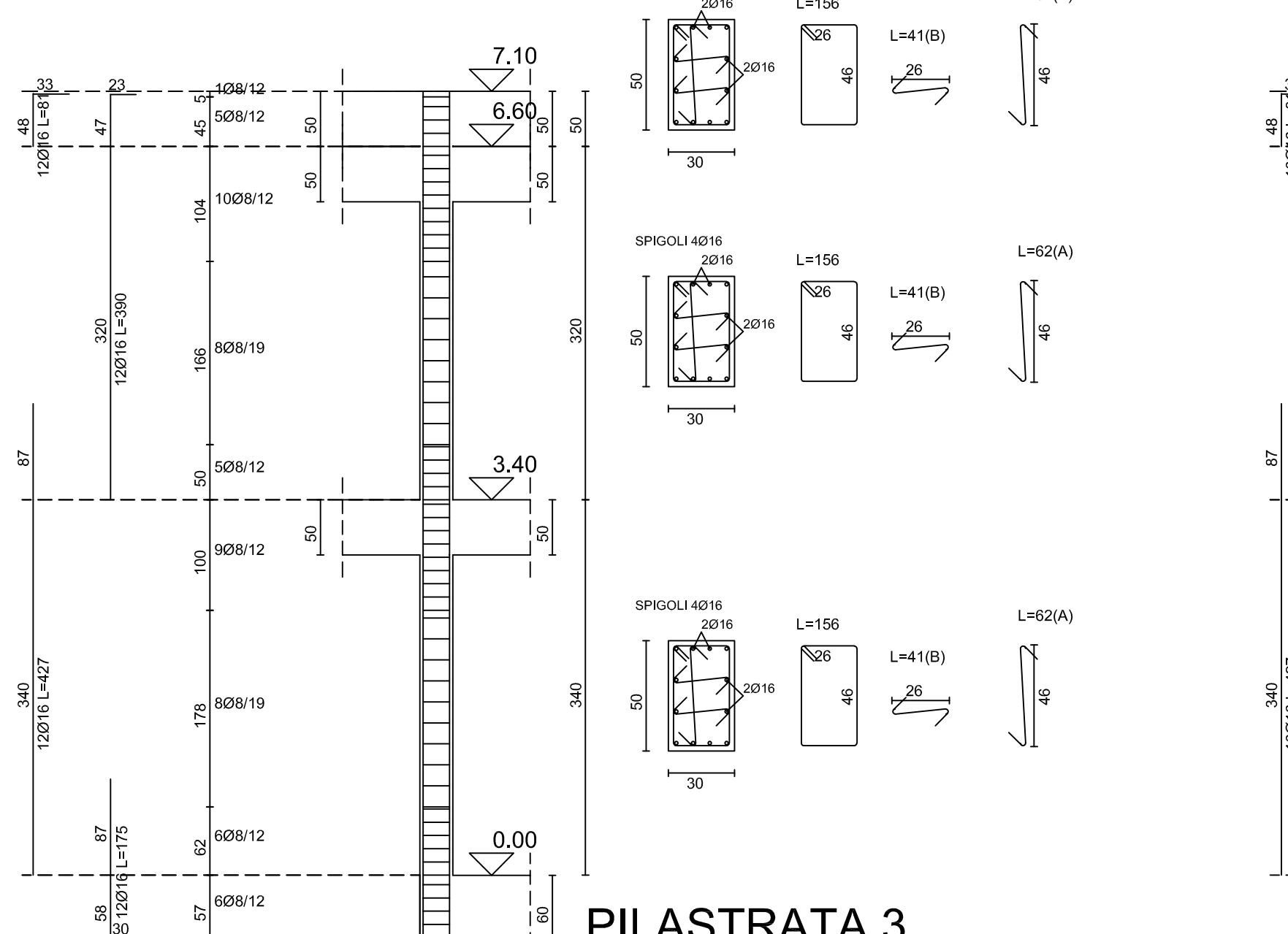
PILASTRATA 4



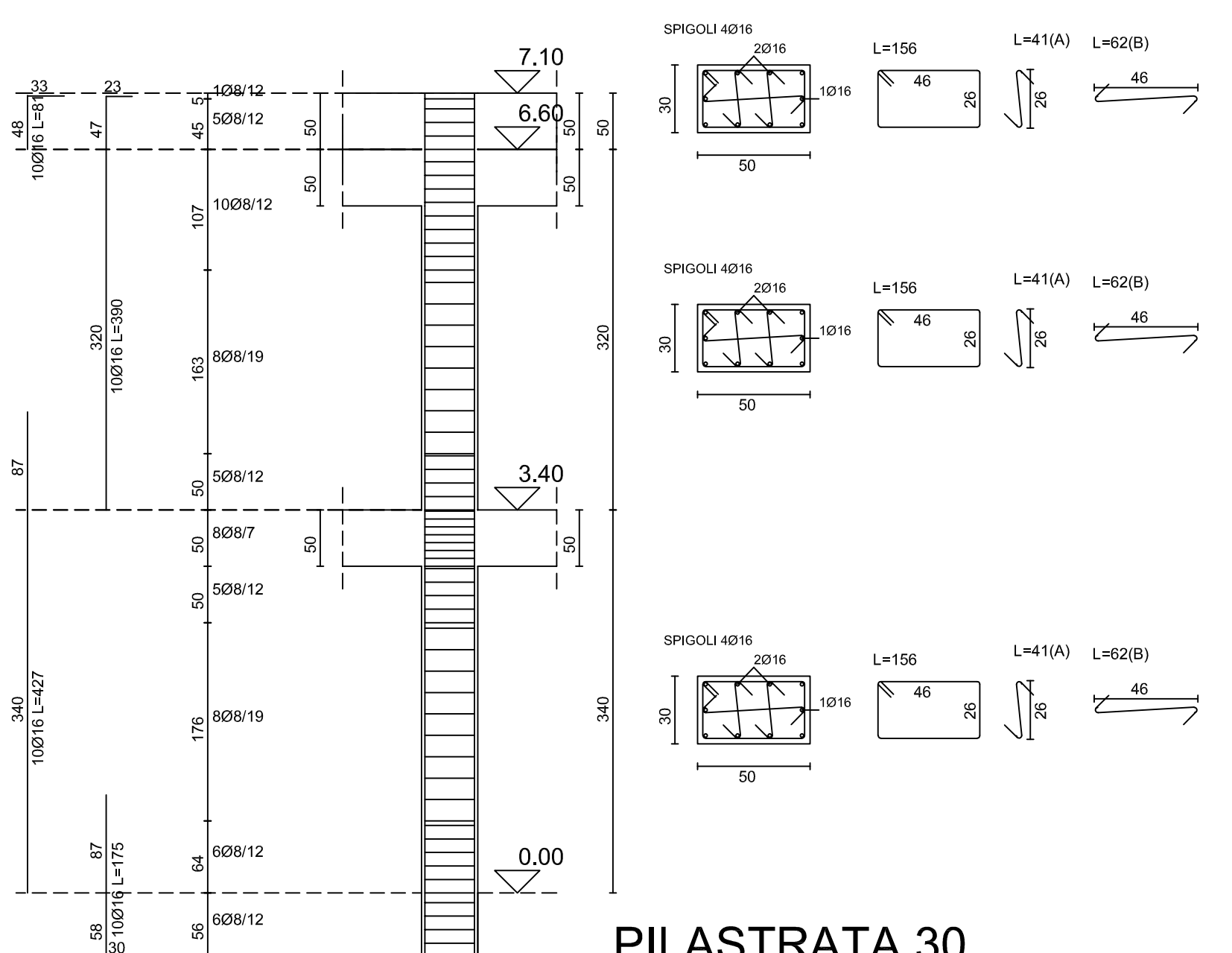
PILASTRATA 5



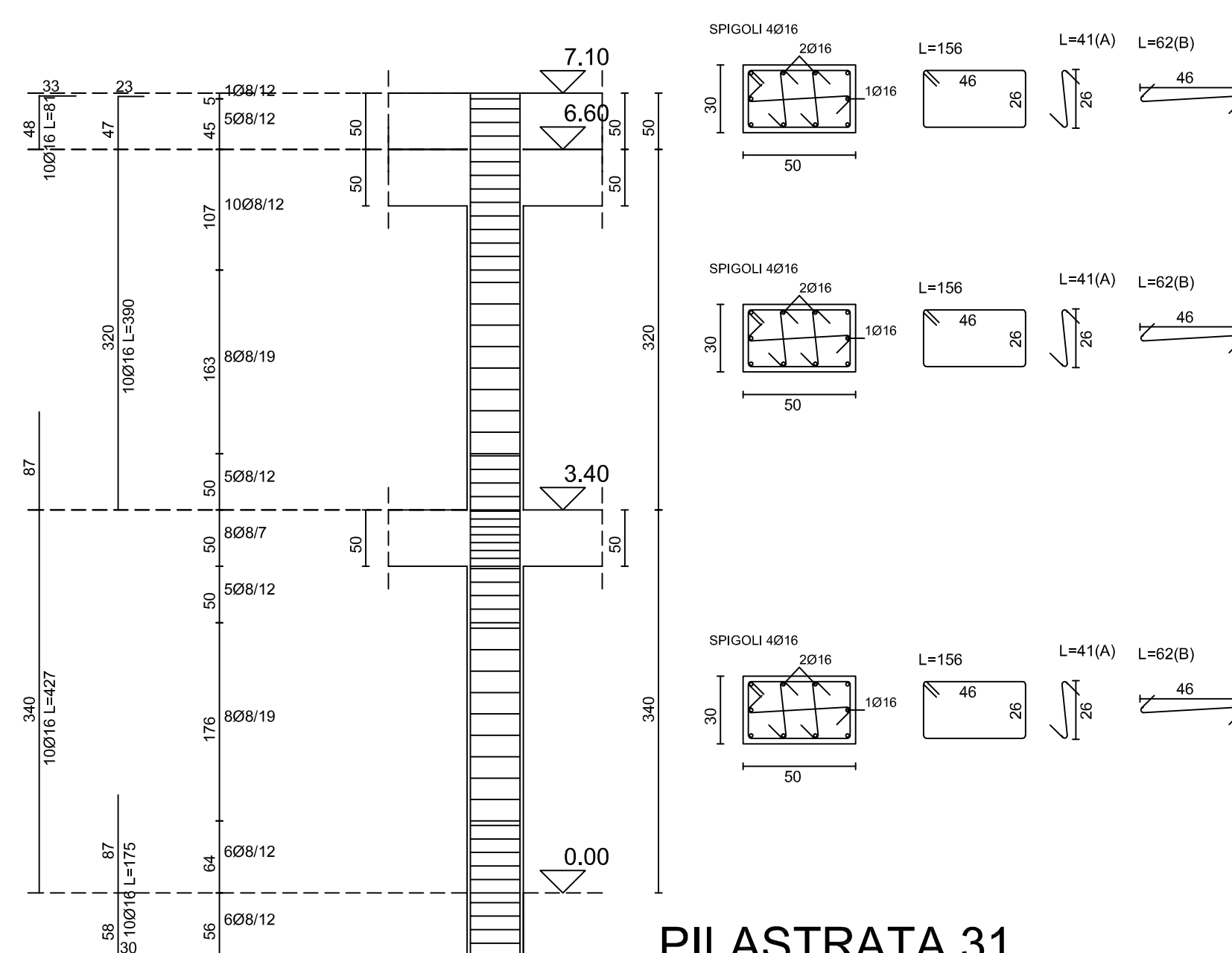
PILASTRATA 29



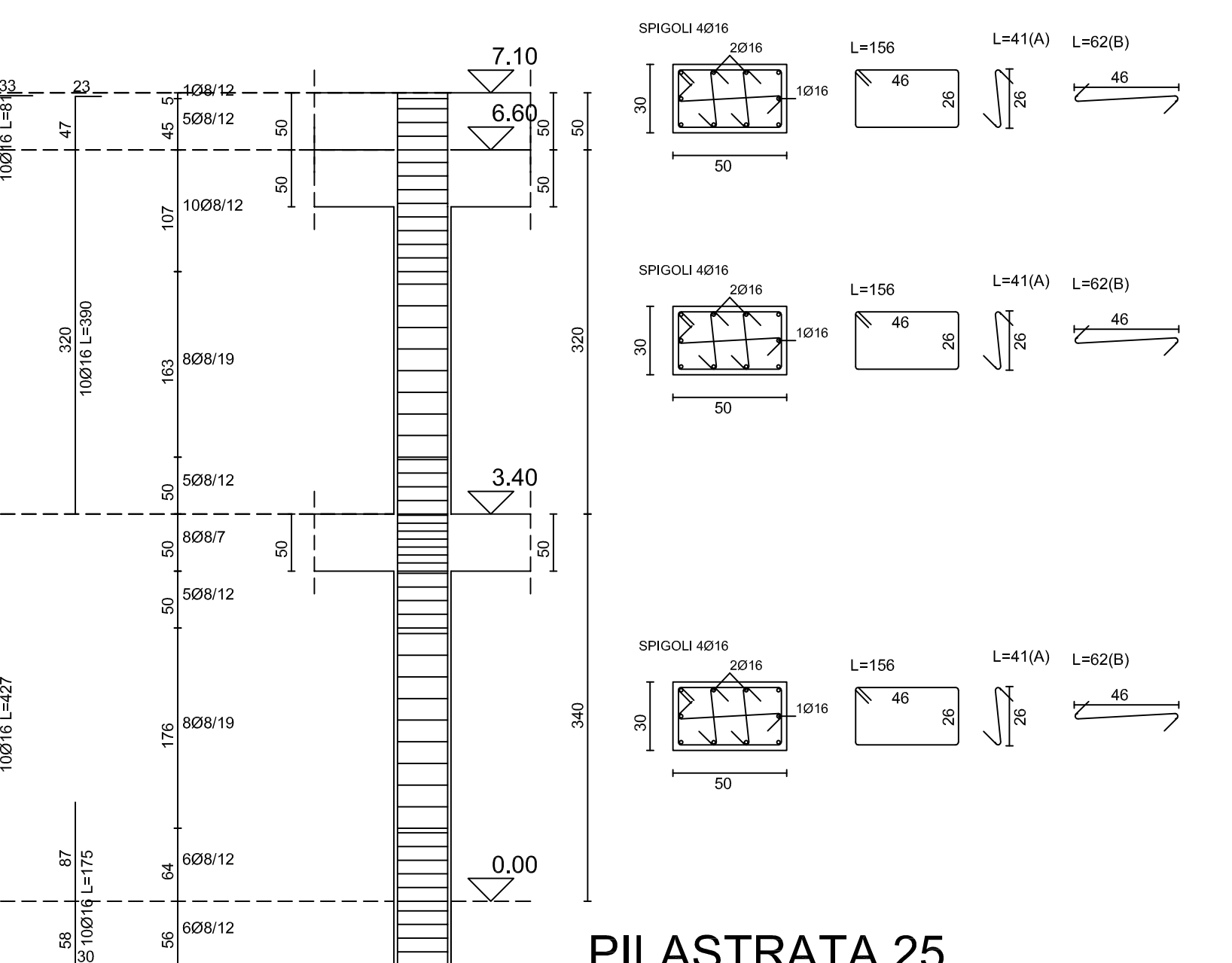
PILASTRATA 3



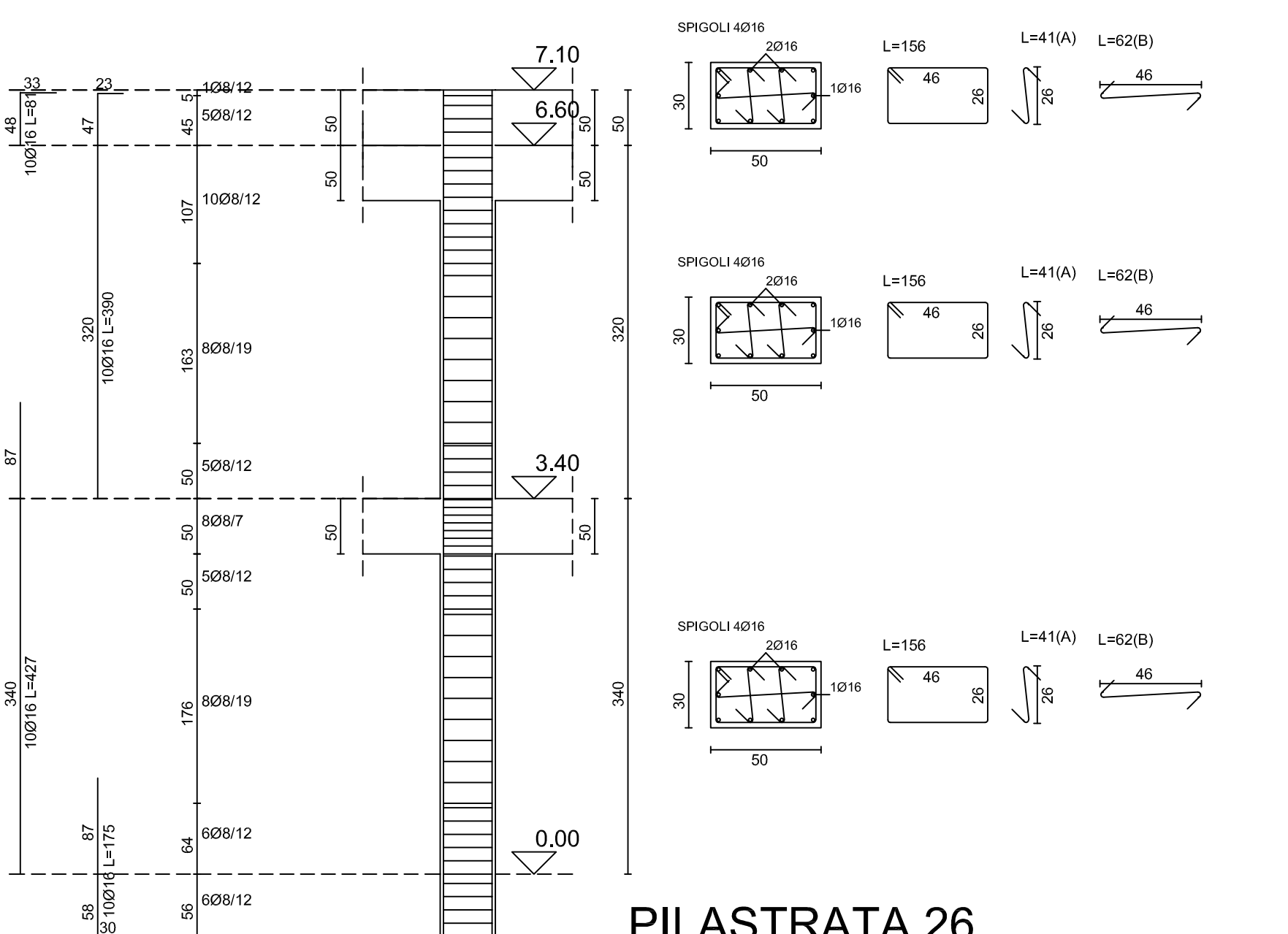
PILASTRATA 30



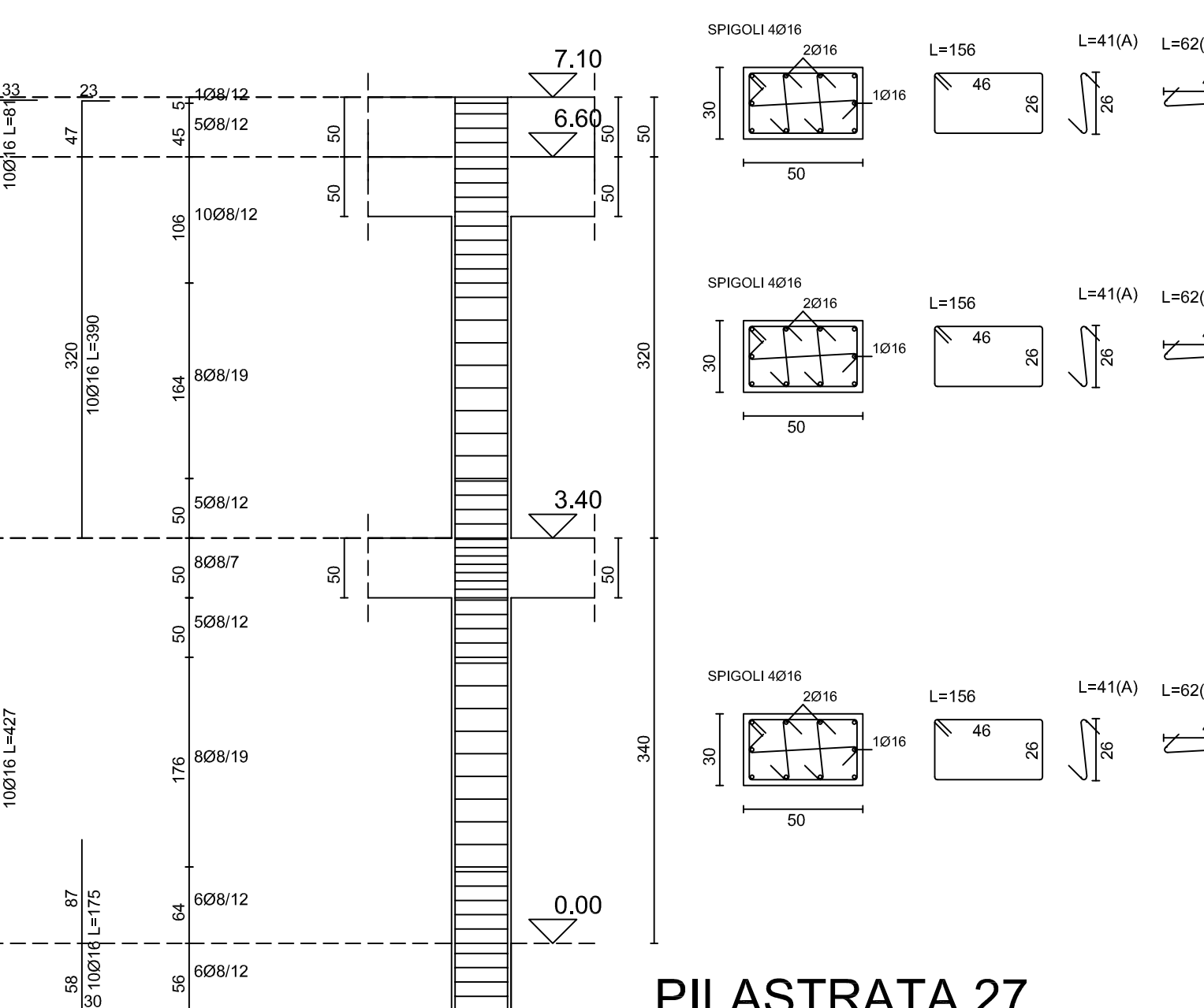
PILASTRATA 31



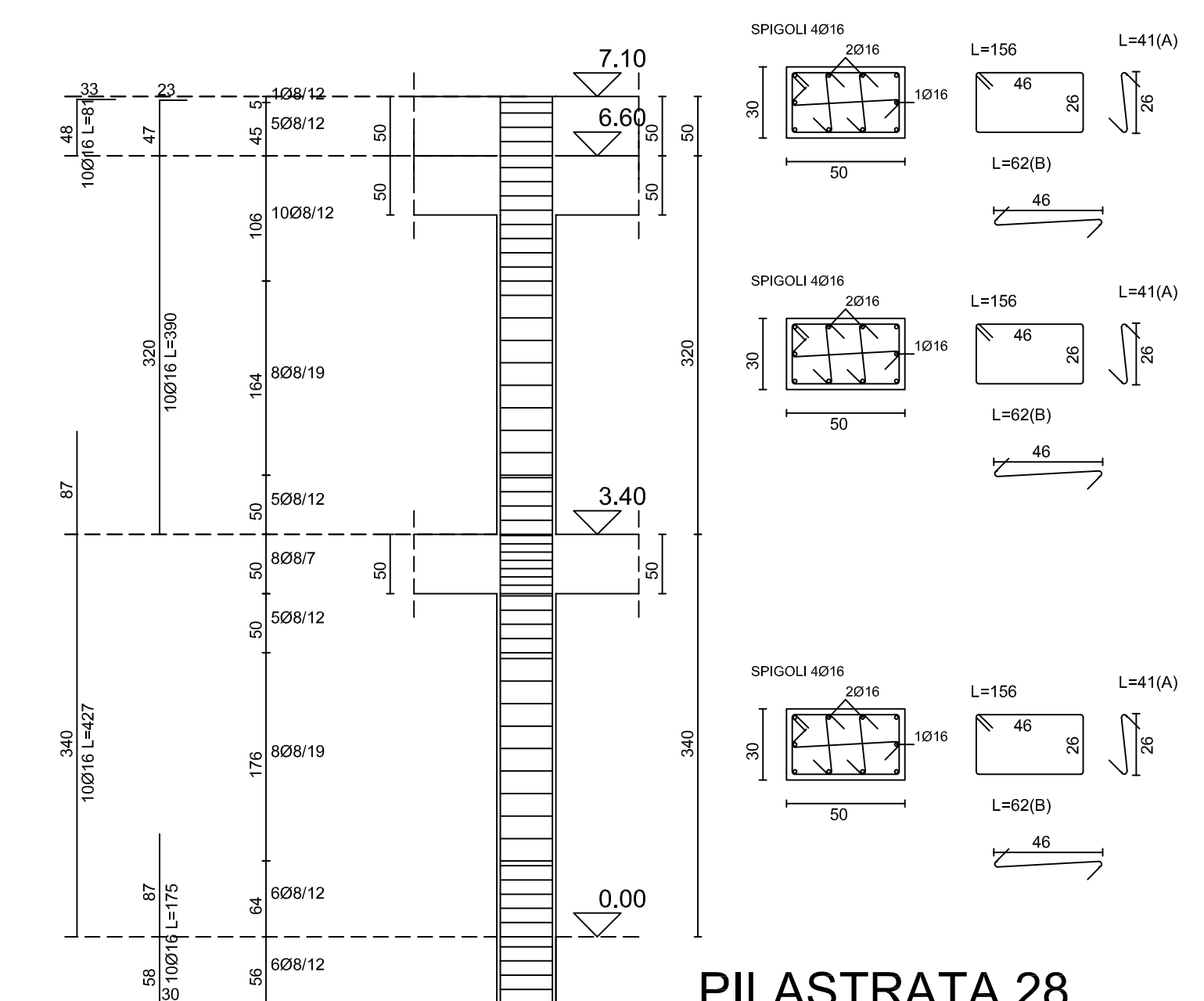
PILASTRATA 25



PILASTRATA 26



PILASTRATA 27



PILASTRATA 28



PROGRAMMA INTEGRATO DI EDILIZIA RESIDENZIALE SOCIALE
RECUPERO E RIFUNZIONALIZZAZIONE
EX COMPARTO RURALE DA DESTINARE A
EDILIZIA RESIDENZIALE SOCIALE E SERVIZI
IN LOCALITA' GROMOLA DI CAPACCIO PAESTUM (SA)

PROGETTO ESECUTIVO

Committente
Città di Capaccio Paestum
(Provincia di Salerno)

Sindaco
Avv. Francesco ALFIERI



Elaborato:

TAV. N. 77.2

STATO DI PROGETTO
FABBRICATO "B"
PILAstrate

Scala: 1:100

Data: AGOSTO 2021

I Progettisti

Ing. Giovanni Vito BELLO

Arch. Gerardino DI FILIPPO

Il R.U.P.

Ing. Federica Turi